

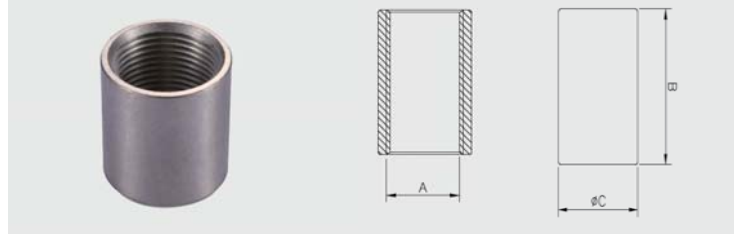
65/66

金属通头

Metal female coupler

材质：黄铜

Material: Brass



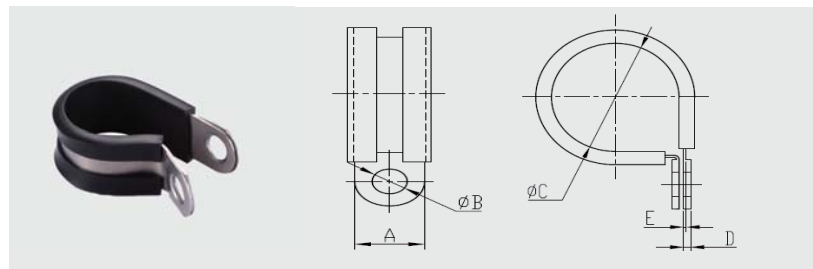
型号 Part no.	螺纹 A Thread	尺寸 Dimension(mm)			包装 (个) Packing
		B	C	D	
B/M16/C	M16X1.5	25.0	20.0		10
B/M20/C	M20X1.5	27.0	24.0		10
B/M25/C	M25X1.5	30.0	30.0		10
B/M32/C	M32X1.5	34.0	37.0		10
B/M40/C	M40X1.5	35.0	45.0		10
B/M50/C	M50X1.5	37.0	55.0		10
B/M63/C	M63X1.5	40.0	69.0		10
B/M75/C	M75X1.5	40.0	80.0		10

金属固定座

P-clip conduit support

材质：铁镀锌 / 304 不锈钢

Material: Galvanized steel / 304 Stainless steel



型号 Part no.		尺寸 Dimension(mm)					包装 (个) Packing
铁镀锌 Galvanized steel	不锈钢 Stainless steel	A	B	C	D	E	
PCLIPC/10	PCLIPC/10-S	13.0	6.4	9.5	1.5	0.7	10
PCLIPC/13	PCLIPC/13-S	13.0	6.4	12.5	1.5	0.7	10
PCLIPC/16	PCLIPC/16-S	13.0	6.4	14.8	1.4	0.7	10
PCLIPC/21	PCLIPC/21-S	13.0	6.4	20.5	1.6	0.7	10
PCLIPC/28	PCLIPC/28-S	13.0	6.4	27.2	1.5	0.7	10
PCLIPC/34	PCLIPC/34-S	13.0	6.4	31.4	1.6	0.7	10
PCLIPC/42	PCLIPC/42-S	13.0	6.4	40.0	1.7	1.0	10
PCLIPC/54	PCLIPC/54-S	13.0	6.4	52.5	1.7	1.0	10